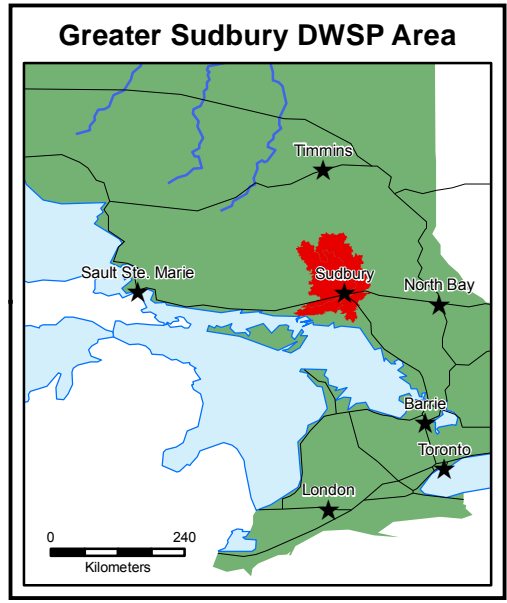


Legend

- Municipal Water Wells
- WHPA A
- WHPA B
- WHPA C
- WHPA D
- Roads
- +— Railway
- ~ Rivers
- ~ Lakes
- ~ Wetlands



This map has been prepared to meet provincial requirements under the Clean Water Act, 2006 and should not be used for other purposes without consultation with the responsible conservation authority and should not be relied on as a precise indicator of routes or locations, nor as a guide to navigation.

This publication was produced by:
 Nickel District Conservation Authority
 200 Brady Street
 Sudbury, ON, P3E 5K3

Data Acknowledgement:
 Members of the Ontario Geospatial Data Exchange
 City of Greater Sudbury
 WESA Inc.
 Golder Associates Ltd.

© Queen's Printer for Ontario [2013]
 Map Projection & Datum: UTM NAD83 Zone 17N



Made possible by the Government of Ontario.



Map 6.9 Frost Wellhead Protection Area