

The Distribution System and Water Quality



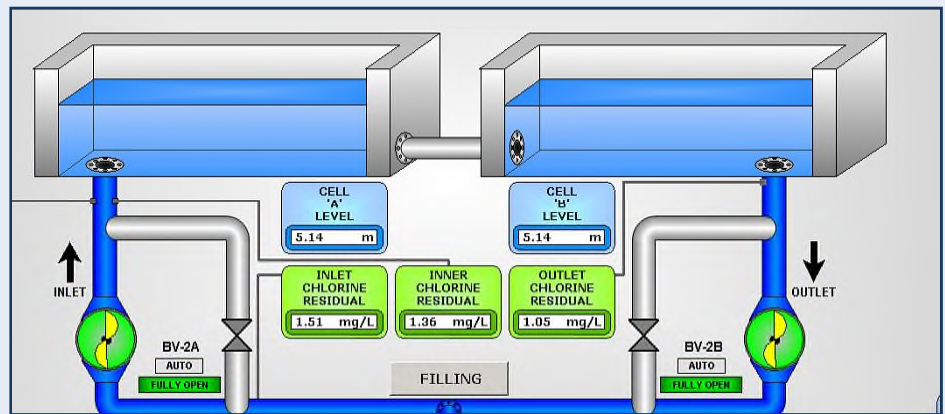
Photo: The Sudbury Star

- The concrete holding tanks serve as impermeable barriers between the internal treated water supply and outside contaminants such as sediment, nutrients and bacteria.
- Distribution consists of an extensive network of underground pipes connecting residences to the drinking water systems.



The Ellis Reservoir

- The Wanapitei Water Treatment Plant and the David St. Water Treatment Plant are connected by the Ellis Reservoir - an underground storage tank built into a hill near Minnow Lake.
- The Ellis Reservoir consists of two cells and has a 36 million liter capacity.
- The reservoir holds treated water from the Wanapitei River and Ramsey Lake before distribution to residents in Greater Sudbury.



- Water treatment plant operators ensure that water quality is maintained within the distribution system.
- Ensuring adequate pressure within the system is important to meet peak water demands, fire service needs and to prevent the backflow of contaminants from occurring.
- Regular leak detection and repair will minimize the opportunity for contaminants to pass into the treated water.