
Seeking Members: Source Protection Committee

Do you have an interest in helping prevent the contamination of our municipal drinking water sources in the Greater Sudbury area? Consider joining the Sudbury Source Protection Committee.

The Sudbury Source Protection Committee is composed of multiple stakeholders including the municipality, the economic sector and other interests sector. Its aim is to prevent the contamination of our municipal drinking water sources in the Greater Sudbury area including Ramsey Lake, the Vermilion River, the Wanapitei River and 24 municipal wells. The Committee was formed in 2007 and in 2014 published a Source Protection Plan to protect our drinking water sources from known or potential contaminants. Currently, the committee is focused on a) reviewing progress in the implementation of the current Plan and b) updating the Plan.

We are seeking to fill three seats on the Committee for the Economic and Other Interests Sectors.

- Two to represent the interests of the “Economic Sector” such as mining, land development, small business, etc.
- One to represent “Other Interests”, such as environmental groups, public health, other non-governmental organizations, and academia.

Applications available: www.sourcewatersudbury.ca; OR
401 – 199 Larch Street, Sudbury

Application deadline: December 9, 2019

Qualifications

- Ability to understand source protection science, concepts and technical reports;
- Ability to act as liaison for the sector being represented;
- An openness to working together and with representatives from other sectors; AND
- Knowledge of local watersheds, communities and issues.

Eligibility

- Reside in, own or rent property within the Sudbury Source Protection Area; OR
- Be employed or operate a business within the source protection area; OR
- Be employed by a municipality that is in the source protection area.

Responsibilities

- Participate fully and work positively toward the success of the source protection program;
- Bring forward common concerns from your knowledge and experience in your sector to the committee and assist in communicating the committee's work;
- Possibly attend public information sessions and participate in public consultation forums.

Time commitment and remuneration

- The term will begin in January 2020 with a length of up to 5 years.
- The Committee currently meets two to three times annually, on a weekday afternoon at Tom Davies Square.
- Per diem is provided and travel expenses are reimbursed.

Application to be a member of the Sudbury Source Protection Committee

The Sudbury Source Protection Committee is seeking to fill three seats on the Committee and is currently accepting applications from the *economic* sector and the *other interests* sector.

Name: _____
First Middle Last

Address: _____
Number & Street Apt# City Postal Code

Telephone: (____) _____ Fax: (____) _____

Email: _____

I am interested in sitting on the Committee as a representative of the following sector (check one):

- Small business
- Mining
- Land development
- Academic institution
- Environmental non-governmental organization
- Other non-governmental organization

Please specify your area of interest or expertise:

Do you rent or own land, live or work within the Sudbury Source Protection Area to be a member of the Source Protection Committee? (Please refer to attached map of the Sudbury Source Protection Area)

Yes No

Are you affiliated with any associations, organizations or clubs whose view you may represent on the Committee?

Yes No

If yes, please describe:

Please describe your interest in municipal drinking water source protection and your interest in sitting on the Committee. *Maximum 500 characters.*

Please describe your knowledge of drinking water source protection science and concepts and how you may bring forward this expertise on the committee. *Please provide a brief summary (maximum 1000 characters) & attach detailed information if desired.*

Please describe your past or current experience with other Advisory Panels, Boards and Committees. *Maximum 500 characters.*

What skills (communication skills, facilitation skills, local watershed knowledge, or other) could you contribute to the Committee? *Maximum 1000 characters.*

By signing and dating this application, you are agreeing to the following:

A commitment to undertake the roles and responsibilities of a member of the Sudbury Source Protection Committee if appointed, including but not limited to:

- Ø Regularly attending meetings of the Sudbury Source Protection Committee; these are usually daytime meetings
- Ø Abiding by the Code of Conduct and Conflict of Interest policies to be established by the Source Protection Committee
- Ø Maintaining confidentiality of confidential and personal information brought before the Sudbury Source Protection Committee

I confirm in making this application that, if appointed, I would carry out the duties and responsibilities as a member of the Sudbury Source Protection Committee as described above. I also certify that the above information provided is accurate.

Signed: _____

Date: _____

The Sudbury Source Protection Authority may consult with representatives from your sector in order to look for endorsement of applications received from the public in regards to those sectors.

I give permission to the Sudbury Source Protection Authority to share this application and any enclosed information submitted with representatives of the economic or other interests sectors for the purposes of seeking advice on the selection of members to represent their sector.

Signed: _____

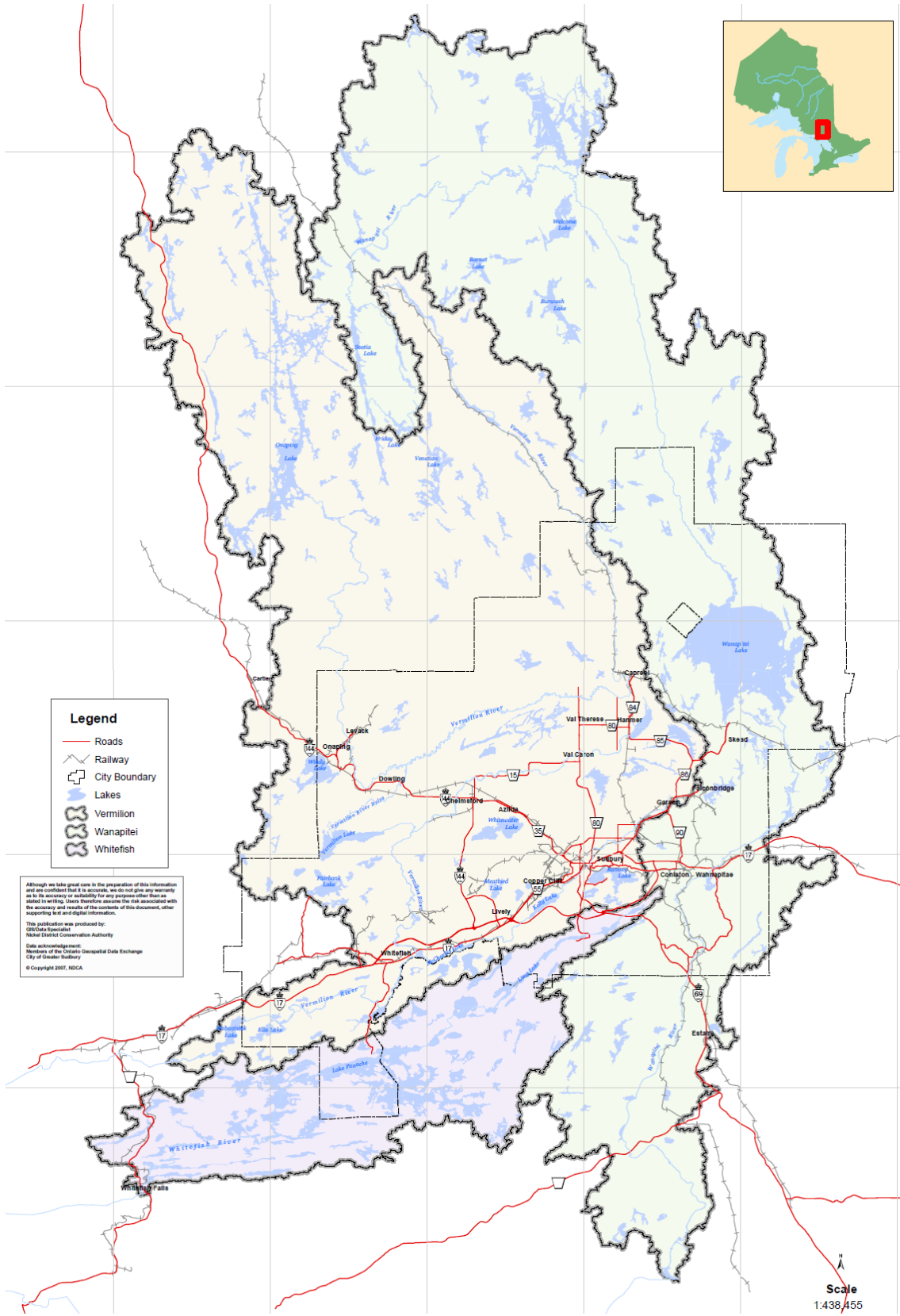
Date: _____

Yes, I will also be including a résumé with this application by mail, e-mail or fax (required).

Please forward any questions to the contact listed below.
Please submit your application and résumé by **December 9, 2019** to:

Sudbury Source Protection Authority
c/o Conservation Sudbury
401 – 199 Larch Street, Sudbury, ON P3E 5P9
Phone: 705.674-5249
Fax: 705.674-7939
Madison.Keegans@ConservationSudbury.ca
www.sourcewatersudbury.ca

Sudbury Source Protection Area



Legend

- Roads
- Railway
- City Boundary
- Lakes
- Vermilion
- Whitefish

Although we take great care in the preparation of this information and are confident that it is accurate, we do not give any warranty as to its accuracy or suitability for any purpose other than as stated in writing. Users therefore assume the risk associated with the accuracy and results of the contents of this document, either supporting or not and digital information.

This publication was produced by:
GIS Data Specialist
Natalie D'Amico
Natalie D'Amico Conservation Authority

Data acknowledgement:
Members of the Ontario Geospatial Data Exchange
City of Greater Sudbury
© Copyright 2007, NDCA

Scale
1:438,455